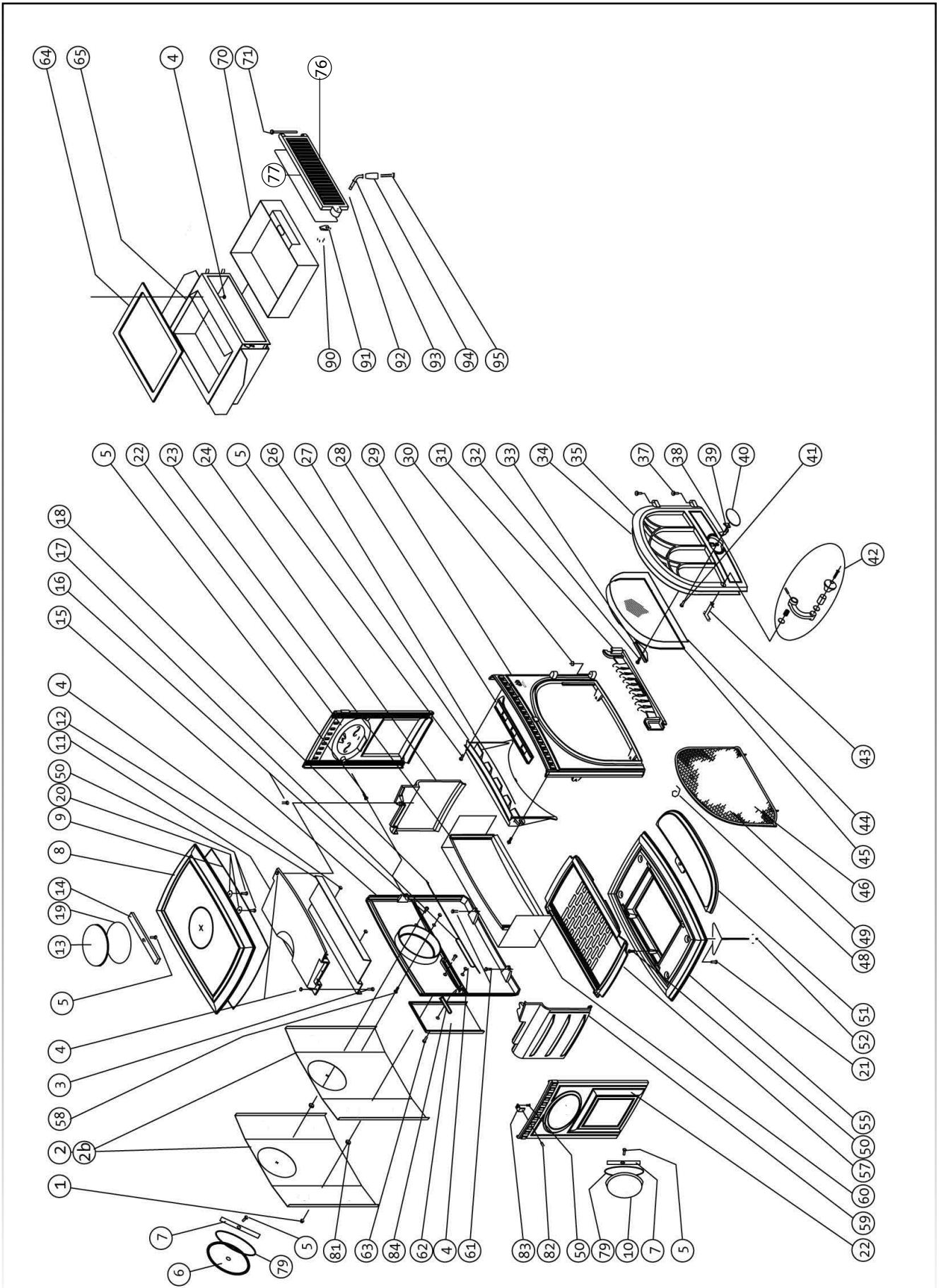


Fig. 18.



10.0 Illustrated Part List for Jøtul F 3 CB

No Description, Dim./Spec.

- | | |
|---|--|
| 1 Nut brass, M6x20 DIN 1587 | 54 Washer, Ø18x0,6, 4x1 |
| 2 Heat shield aluz. f/ivory en. | 55 Bottom plate, |
| 2 b Heat shield | 57 Inner bottom plate |
| 3 Screw, M6x16 DIN 965 | 58 Screw sink head, M6x25 sortkrom.poz. (black-poz.) |
| 4 Nut , M6 DIN 934 | 59 Burn plate left |
| 5 Screw collar, M6x16 st.5.6 ubeh. | 60 Insulation, Firemaster blanket (after X-607) |
| 6 Cover smoke outlet rear | 61 Screw , M8x25 st.8.8 |
| 7 Traverse bar to cover smoke outlet rear | 62 Cover/sec. air inlet, |
| 8 Top plate compl. w/ cover smoke outlet | 63 Screw sinkhead, M6x40 poz DIN 965 |
| 9 Gasket, LD 375-2 9.5x1800 | 64 Gasket-flat |
| 10 Cover smoke outlet side | 65 Ash house w\ heat shield and hinge (after 1998) |
| 11 Baffle plate | 66 Hinge, ash house (before 1998) |
| 12 Air distributor USA | 69 Screw sh Pozid, M6x10 DIN 965 (before 1998) |
| 13 Cover smoke outlet top | 70 Ash box, 1mm steel plate |
| 14 Traverse/cover smoke outlet top | 71 Hinge pin, Ø6x100 |
| 15 Back plate | 76 Door, Ash Compartment |
| 16 Screw, M6x35 st.5.6 ubeh | 77 Gasket, LD 250-2 Ø6.4x730 |
| 17 Gasket, LD 360 M/L Ø8.7x150 | 78 Door latch |
| 18 Gasket, LD 360 M/L Ø8.7x560 | 79 Gasket, LD 250 m\l Ø6,4x600 |
| 19 Gasket, LD 250-2 M/L Ø6,4x540 | 81 Hexagon nut, M8 DIN 934 |
| 20 Cast iron washer | 82 Set Screw, socket hd, M6x20 DIN 914 |
| 21 Screw, M8x20 st.8.8 | 83 Fixing bracket |
| 22 Side plate | 84 Air blocker (for USA) |
| 23 Burn plate, back | 90 Nut , M10 DIN 934 |
| 24 Burn plate right | 91 Door latch, 3mm stainless steel |
| 26 Air deflektor | 92 Spring Ø10 inside, 2mm stainless steel |
| 27 Gasket, LD 187-1 M/L 4.8x410 | 93 latch bolt ash door, Steel |
| 28 Sliding vent | 94 Wooden knob, Hard wood |
| 29 Front plate | 95 Skrew, M6x60 DIN 84 |
| 30 Washer, Ø12x6x0.5 | 96 Cast iron flue collar |
| 31 Log retainer. | 97 Screw, M6 x 60 mm countersunk PH, 2 |
| 32 Screw, M6x8 poz | 98 Flue Collar Cross Bar |
| 33 Glass clip w\ gasket | |
| 34 Gasket, LD 360 Ø8.7x1480 | |
| 35 Door compl. w/o glass | |
| 37 Hinge pin, Ø0,6x33 | |
| 38 Ignition vent | |
| 39 Washer, D nr. 531241 | |
| 40 Cover/ign. vent | |
| 41 Screw/collar, M6x12 st. 8.8 ubeh. | |
| 42 Handle compl., nickel-plated | |
| 43 Locking bar | |
| 44 Gasket, LD 187 m\l Ø4,8x1800 | |
| 45 Glass , 358 x 233 mm | |
| 46 Spark screen | |
| 48 Spring | |
| 49 Knob, plastic, 0,30mm M6 | |
| 50 Screw collar, M6x16 st. 5,6 | |
| 51 Ash lip | |
| 52 Leg | |
| 53 Skrew M6x20 ST 8,8 ubeh. | |

Only use replacements parts provided through your authorized Jøtul dealer.